

ARCHIVES

DE

ZOOLOGIE EXPÉRIMENTALE

ET GÉNÉRALE

HISTOIRE NATURELLE — MORPHOLOGIE — HISTOLOGIE
ÉVOLUTION DES ANIMAUX

FONDÉES PAR

HENRI de LACAZE-DUTHIERS

PUBLIÉES SOUS LA DIRECTION DE

G. PRUVOT

ET

E.-G. RACOVITZA

PROFESSEUR A LA SORBONNE
DIRECTEUR DU LABORATOIRE ARAGO

PROFESSEUR A L'UNIVERSITÉ DE CLUJ
DIRECTEUR DE L'INSTITUT DE SPÉOLOGIE

TOME 59

Fascicule 1 bis

PLANCHES I à XVIII

du mémoire de E. CHATTON: Les Périidiniens
parasites; morphologie, reproduction, éthologie.

PARIS

LIBRAIRIE H. LE SOUDIER

174, BOULEVARD SAINT-GERMAIN, 174



Les mémoires publiés dans les Archives paraissent isolément; le volume sera donc composé d'un nombre variable de fascicules.

Ce fascicule n'est pas vendu séparément. Il doit être fourni gratuitement aux abonnés et aux acheteurs du fascicule 1.

16626



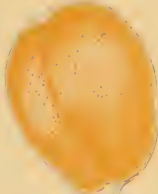
2.



9.



3.



5.



6.



8.



7.



4.

10.



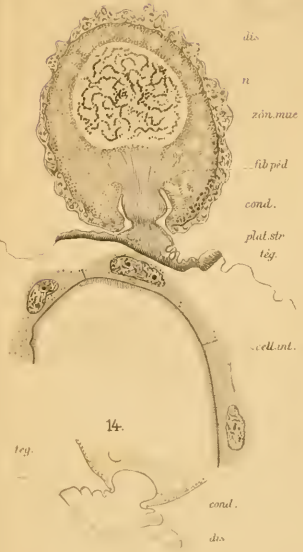
11.



12.



15.



dis.

n.

zin. mac.

fib. ped.

cond.

plur. str.

teg.

cell. int.

cond.

dis.

dis.

n.

13.



fib. ped.

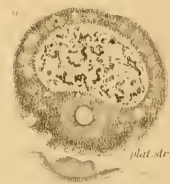
dis.

teg.

par. int.

14.

16.



fib. ped.

plur. str.



17.

24.

25.

27.

28.

18.

17.

20.

br.

19.

n.

29.

22.

26.

21.

11. + 1

12. + 2

13. + 3

mm.

32.

tr
col

c
gt
tq
cord

34.

c
col
cond.
rh

33.

gt
tr
col
cond

35.

cyt
tq
lac

33.

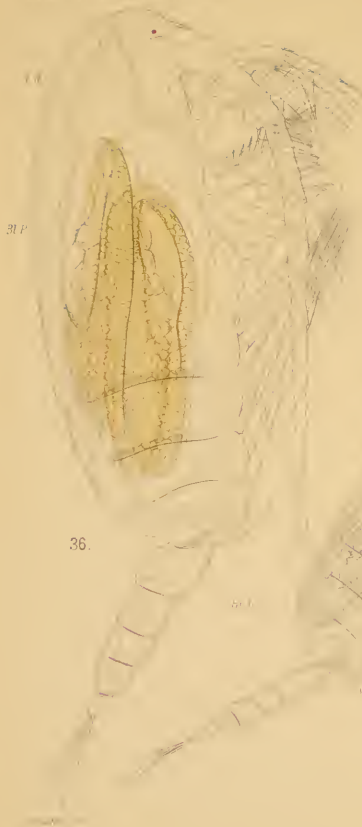
c
col
cond
rh

rh

J. Chiron del.

Tab. 34. (11) Larve Lepto.

Verlag von Franz Schöningh's Buchhandlung in Bonn



Bl p

36.



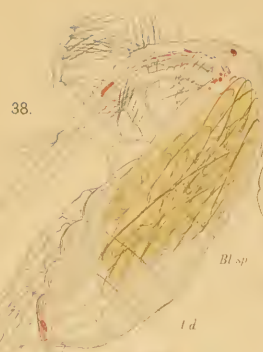
40.

Nb s

Ld

Ld

37.

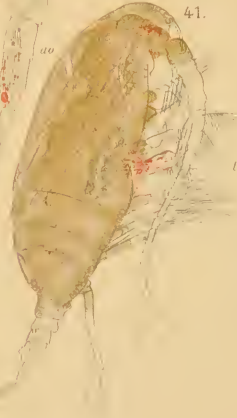


38.

Bl sp

Ld

Sp r



41.

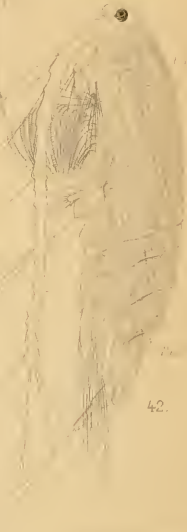
Ld



39.

Ld

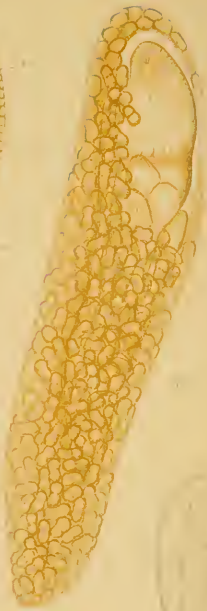
Bl x



42.







76

77



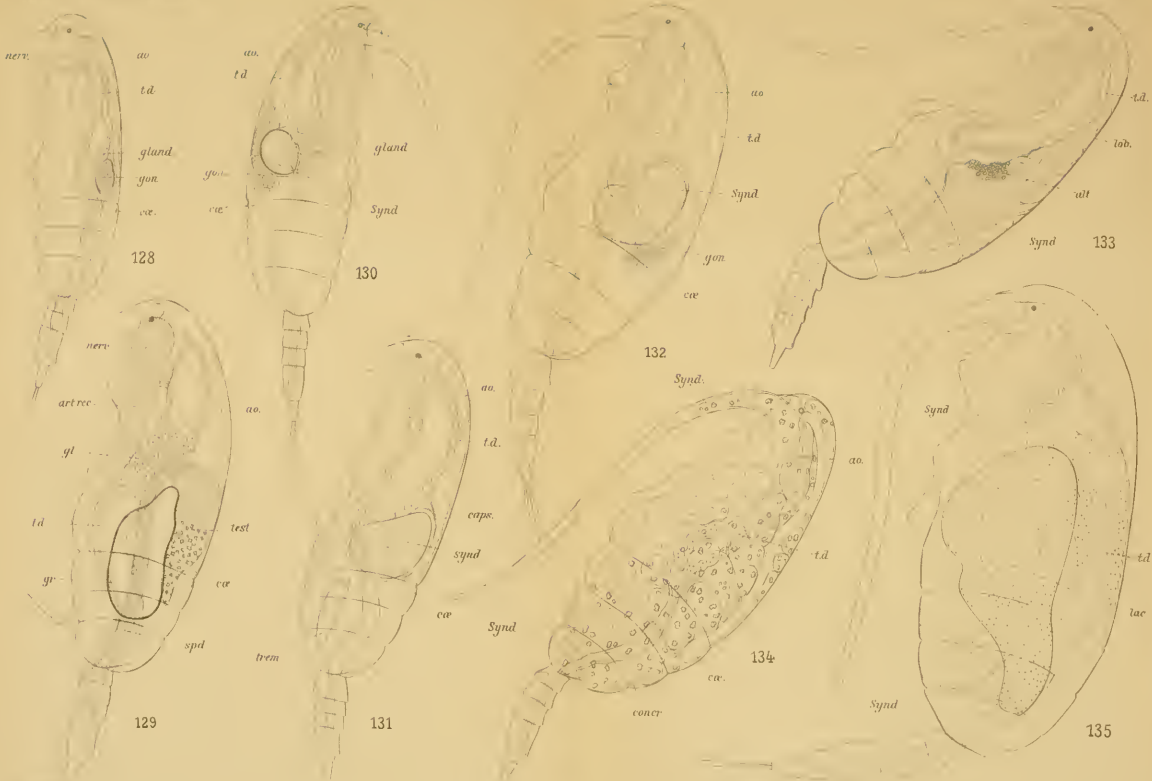


E. Chatton del.

Lith. Anst. v. E.A. Furbach, Leipzig



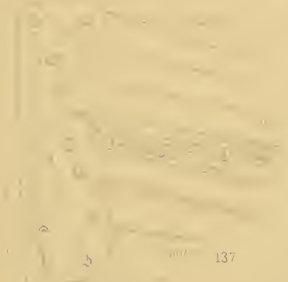




Pl. XI

PLATE XI. ANATOMY OF THE SYMPLECTERINAE. (Continued from Plate X.)

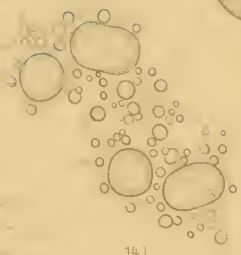
Lith. inst. v. D. A. Funkh. Leipzig



137



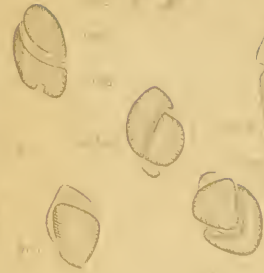
135



141



147



146



151



150



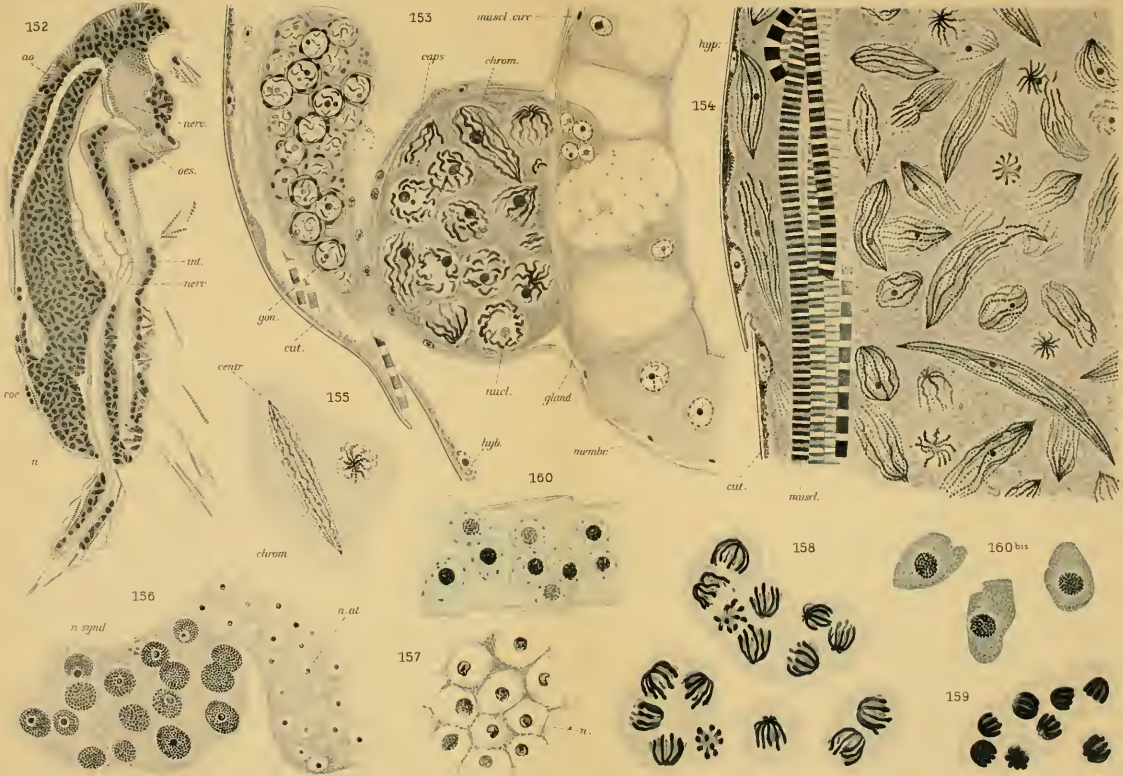
flayh



149



148



277.111.

GENRE SYNDINIUM C. TUREO CYDILLIÆ

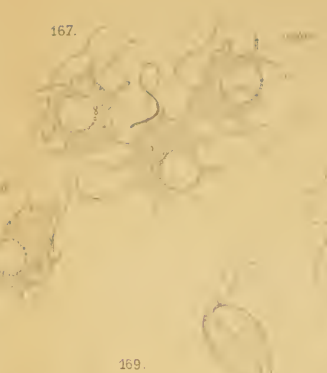
Zool. Anat. v. F. A. Fuchs. Leipzig



164



167



169

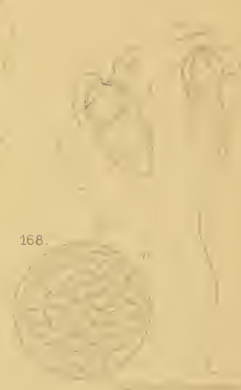
170



165



156



168

171

172

173

1100

1100

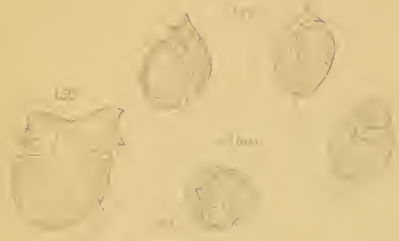
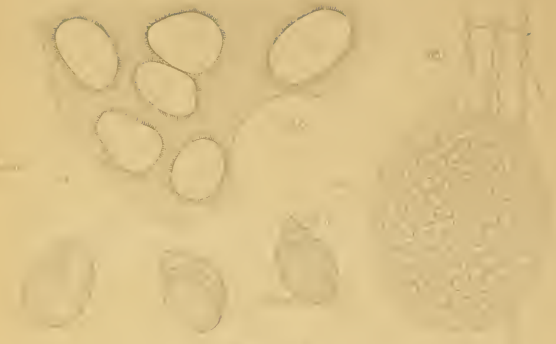
174

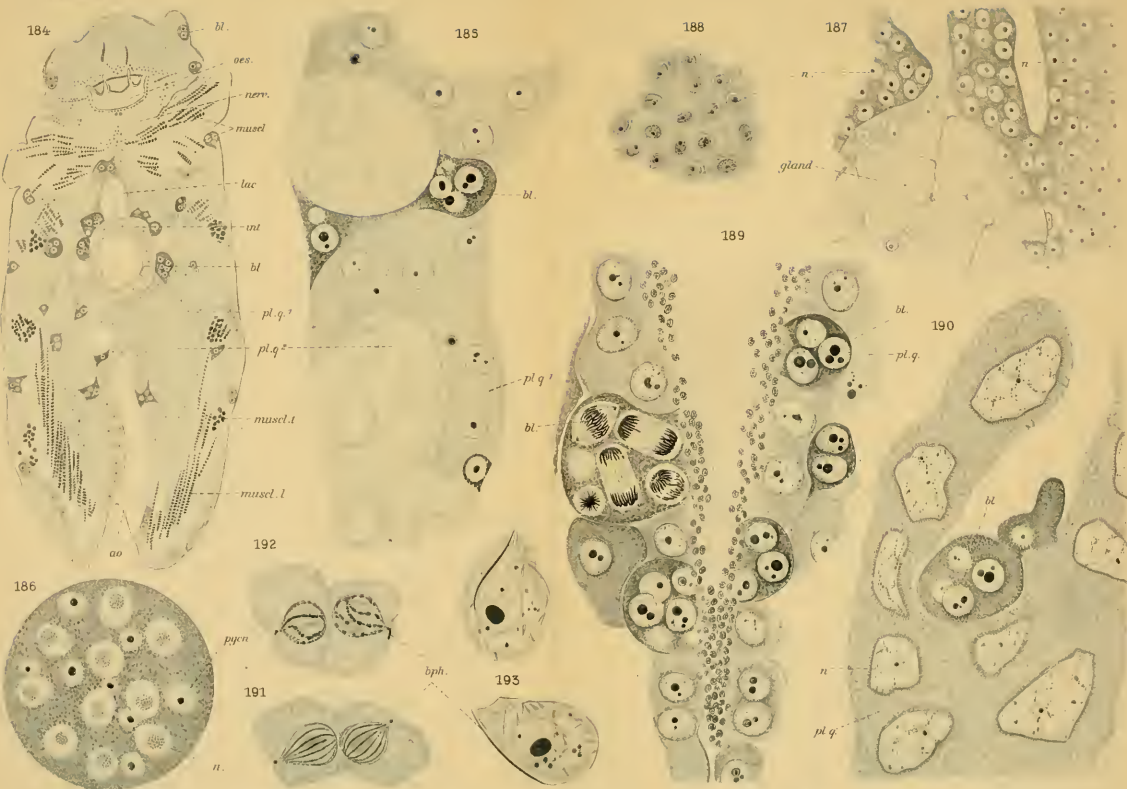
1100

175

178

176

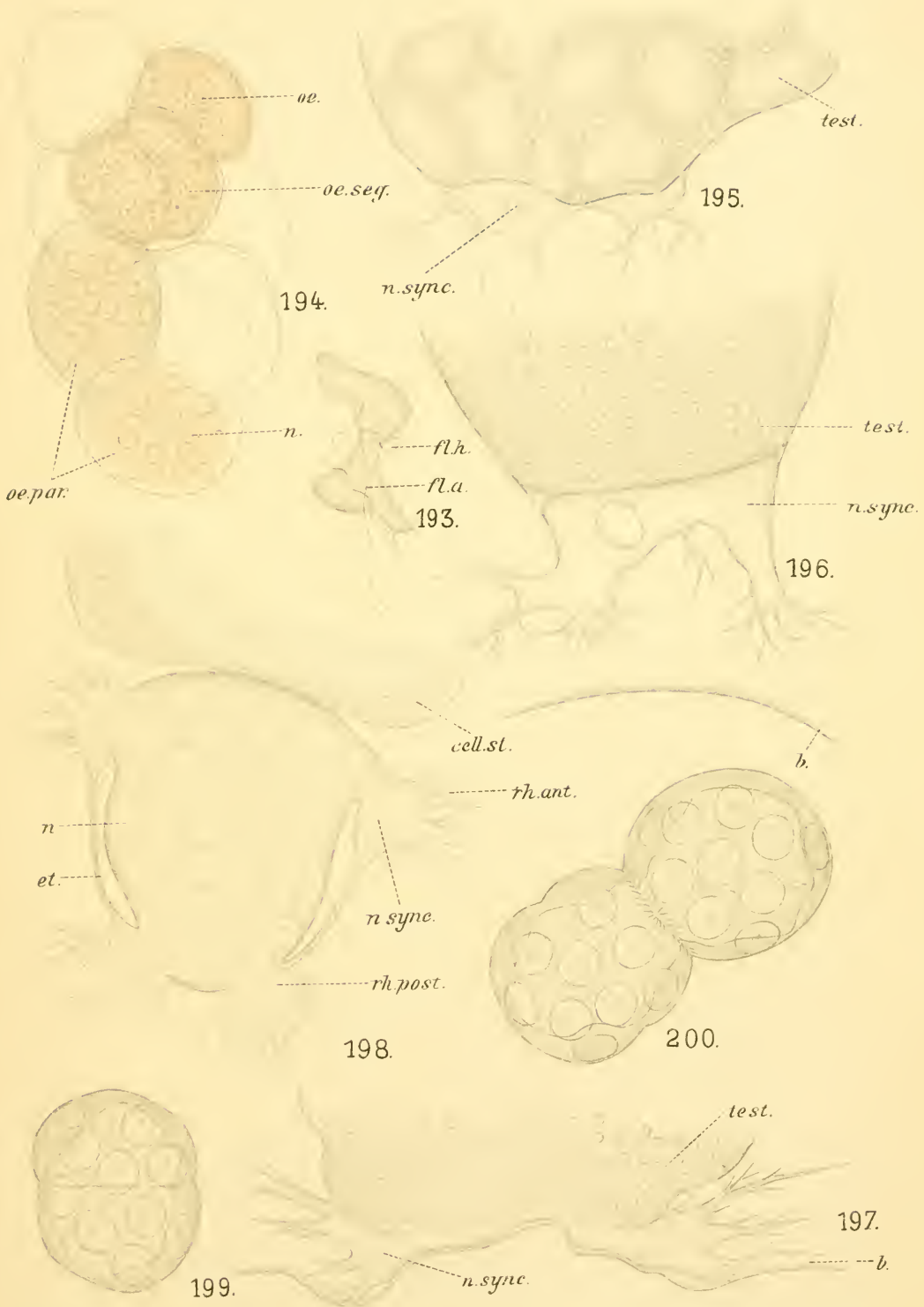




K. Thomsen del.

184-186 ET 189-193: STREPTOPHYLUM; 187-190: EPIDERMIS & MUSCULI; 191-193: ...

With Anst. v. E. A. Purke, Leipzig



E. Chatton del.

Lith. Anst. v. E. A. F. F. Leipzig

GENRE TRYPANODINIUM, ET NERESHEIMERIA.